

# SONIC MEGA COLLECTION™



INSTRUCTION BOOKLET



THIS SEAL IS YOUR ASSURANCE THAT NINTENDO HAS APPROVED THE QUALITY OF THIS PRODUCT. ALWAYS LOOK FOR THIS SEAL WHEN BUYING GAMES AND ACCESSORIES TO ENSURE COMPLETE COMPATIBILITY WITH YOUR NINTENDO SYSTEM.



**THIS GAME SUPPORTS ALTERNATING GAME PLAY WITH ONE, TWO, THREE OR FOUR PLAYERS AND CONTROLLERS.**



**THIS GAME REQUIRES A MEMORY CARD FOR SAVING GAME PROGRESS, SETTINGS OR STATISTICS.**

***2 PLAYER SIMULTANEOUS***

**LICENSED BY**



Thank you for purchasing SONIC MEGA COLLECTION™. Please note that this software is designed only for use with the NINTENDO GAMECUBE. Be sure to read this instruction booklet thoroughly before you start playing.

# SONIC MEGA COLLECTION™



## CONTENTS

Setting Up .....	4
Controls .....	5
Starting the Game .....	6

Sonic & Knuckles .....	24
Sonic 3D Flickies' Island.....	28
Sonic the Hedgehog Spinball ...	32
Dr. Robotnik's Mean Bean Machine .....	36

## •GAMES

Sonic the Hedgehog.....	10
Sonic the Hedgehog 2.....	14
Sonic the Hedgehog 3.....	19

While the games in this collection have retained their original MEGA DRIVE™ format, minor graphical modifications have been made.



# Setting Up



## HARDWARE SETUP

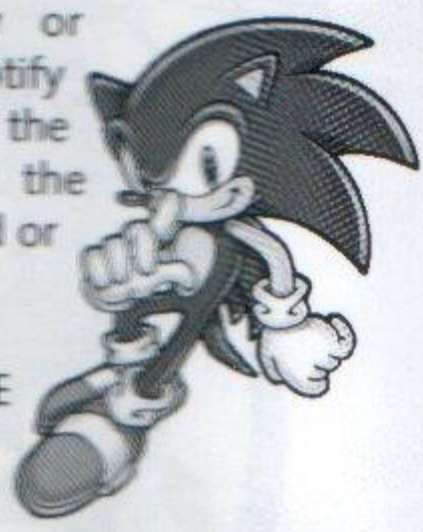
SONIC MEGA COLLECTION™ is a collection of games for one or two players. Connect the NINTENDO GAMECUBE CONTROLLERS to the Controller Sockets 1 and 2 (depending on the number of players participating).



## MEMORY CARD

SONIC MEGA COLLECTION™ is compatible with the NINTENDO GAMECUBE MEMORY CARD 59 (sold separately). Insert the Memory Card to Memory Card Slot A. 2 blocks of free memory and one free file are needed to create the system file (which includes all game data for Sonic the Hedgehog 3 etc.).

When the data is being saved, manually or automatically, a message will be displayed to notify that such action is taking place. Never turn OFF the NINTENDO GAMECUBE power or remove the Memory Card while the game data is being saved or loaded.

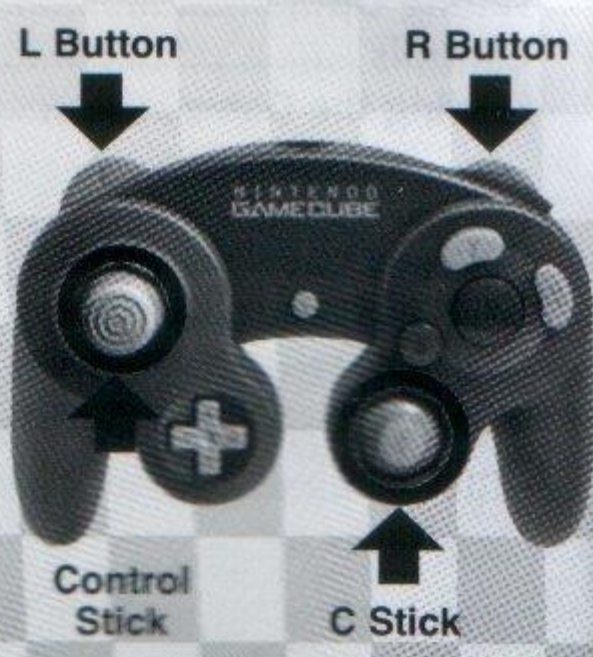


Please refer to the NINTENDO GAMECUBE instruction booklet for directions on how to format and erase Memory Card files.

## CONTROLLER NEUTRAL POSITION RESET

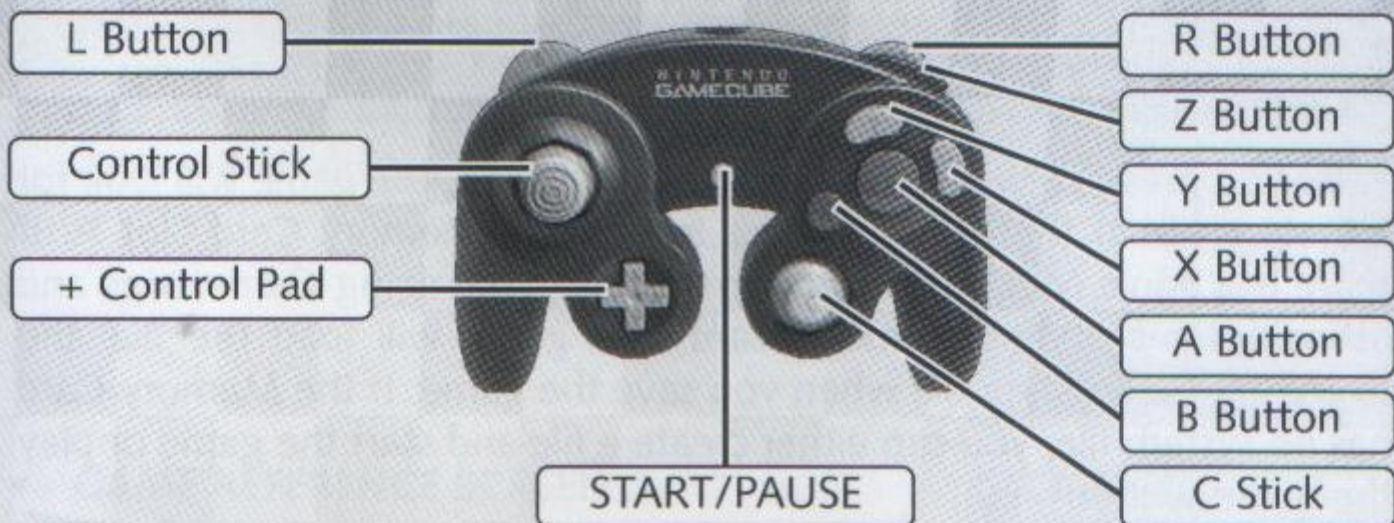
If the L or R Buttons are pressed or the Control Stick or C Stick are moved out of neutral position when the power is turned on, those positions will be set as the neutral position, causing incorrect game control during game play.

To reset the controller, release all buttons and sticks to allow them to return to the correct neutral position, then hold down the X, Y and START/PAUSE Buttons simultaneously for 3 seconds.





# Controls



\*All controls explained in this manual are in "DEFAULT 1" configuration. See P.8 for details on Controller Configuration (of Options Menu).

## MULTIPLAYER GAMES

With some games, more than one player can participate either simultaneously or alternating.

### • SIMULTANEOUS PLAY

With simultaneous play, players use their own controller to play (connected to Controller Sockets 1 and 2).

### • ALTERNATING PLAY

With alternating play, each player takes turns playing the game using one controller (connected to Controller Socket 1).

## GAME CONTROLS

The following game controls are common to most Sonic the Hedgehog titles. Press START/PAUSE during any game to pause the action.

- Press ←/→ on the Control Stick /+ Control Pad to run, hold down to speed up (dash), and press the reverse direction to brake quickly.
- While moving, press ↓ to move freely while spinning and attack enemies. Press the A, B, or X Buttons to jump and Spin Attack.
- Hold down ↓ on the Control Stick /+ Control Pad while standing and then press the A, B, or X Buttons to spin. Release the button to perform a Spin Dash.



The additional button function and character-based controls are not explained under each game title but after selecting them. There is a special screen for this just before launching each game. These controls do not apply to Sonic 3D Flickies' Island, or Dr. Robotnik's Mean Bean Machine.



# Starting the Game



## GAME FILES

After you press START/PAUSE on the Title Screen, the game will look for a system file in the Memory Card inserted in Memory Card Slot A. If there is a Sonic Mega Collection system file containing Game Logs and other options in the Memory Card, the game will load the file and overwrite the existing file when you save the game. If the Memory Card has no system file, you can either create a file and start the game or play the game without one.

If there is no Memory Card inserted, a Warning Screen will be displayed. Use Control Stick / + Control Pad  $\uparrow/\downarrow$  to select either "Continue without saving" or "Retry" and press the A Button. If there is no space available on the Memory Card, there is an additional option called "Manage Memory Card".



## MEGA COLLECTION MENU

### Menu Controls

- START/PAUSE
- Control Stick / + Control Pad
- A Button
- B Button

- GAME START
- SELECT / SCROLL
- ENTER
- CANCEL / PREVIOUS MENU

The first screen you access is the Sonic Mega Collection Menu. Use  $\leftarrow/\rightarrow$  to select the menu item and press the A Button to enter.

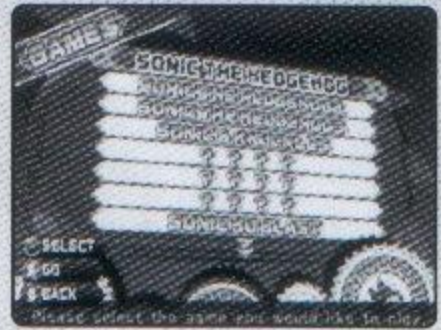


- GAMES** Access to available games.
- MANUALS** Check the original game manuals.
- OPTIONS** Change and save various game settings.
- EXTRAS** View movies, illustrations, and comics.

# Starting the Game

## GAME MENU

During the Game Menu, use  $\uparrow/\downarrow$  to select from available game titles and press the A Button to enter.



- GAME REFERENCE SCREEN**

The Game Reference Screen will be displayed when you select a title from the Game Menu. Use  $\uparrow/\downarrow$  to scroll the screen. Press the X Button to see the manual, the A Button to start the game, or the B Button to return to the Game Menu.



## MANUALS / EXTRAS

### Manuals / Extras Controls

- C Stick
- Control Stick / + Control Pad
- R Button
- L Button
- A Button
- B Button

- $\leftarrow$  : back page /  $\rightarrow$  : next page
- Select Menu Item / Move
- Zoom in
- Zoom out
- Display or remove manuals functions on screen
- Back

The digital manual can be accessed through either Game Reference Screen or directly from the SONIC MEGA COLLECTION™.



From the Extras Menu, use  $\uparrow/\downarrow$  to select the menu items and press the A Button to enter. Use the above controls to view the "COMICS" and "ILLUSTRATIONS".



Comics provided by Archie Comic.

# Starting the Game

## OPTIONS

During the Options Menu, use  $\uparrow/\downarrow$  to select the menu items and press the A Button to enter.

To save the game settings you have chosen, select "SAVE & EXIT" and press the A Button. Press the B Button to return to the Sonic Mega Collection Menu without saving.



- **Audio**



Use  $\uparrow/\downarrow$  to select either "STEREO" or "MONO" (Monaural) and press the A Button. Press the B Button to return to the Option.

- **Controller Configuration**



Use  $\uparrow/\downarrow$  and the A Button to select "DEFAULT 1," "DEFAULT 2," or to make customised key configurations. Select "EXIT" and press the A Button, or press the B Button to return to the Options Menu. All explanations have assumed DEFAULT 1 configuration.

- **Language select option**

- **Credits**



Credits for SONIC MEGA COLLECTION™ are displayed automatically. Press the B Button to return to the Option Menu.

- **Save & Exit**



Save option setup to Memory Card (system file).



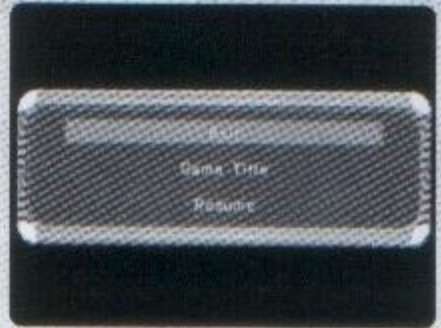
### EXIT GAME

During gameplay (all titles), press the Z Button to exit the game, and then use ↑/↓ and the A Button to select from the following:

**Exit:** Takes you to the Mega Collection Game Menu.

**Game Title:** Takes you to the Title Screen of the currently selected game.

**Resume:** Returns you to the game in progress.



### GAME SCORE

All enemies are worth 100 points. Defeating Dr. Robotnik at the end of a Zone earns you 1,000 points. Both a Time Bonus and a Ring Bonus will be added to your final score when available.



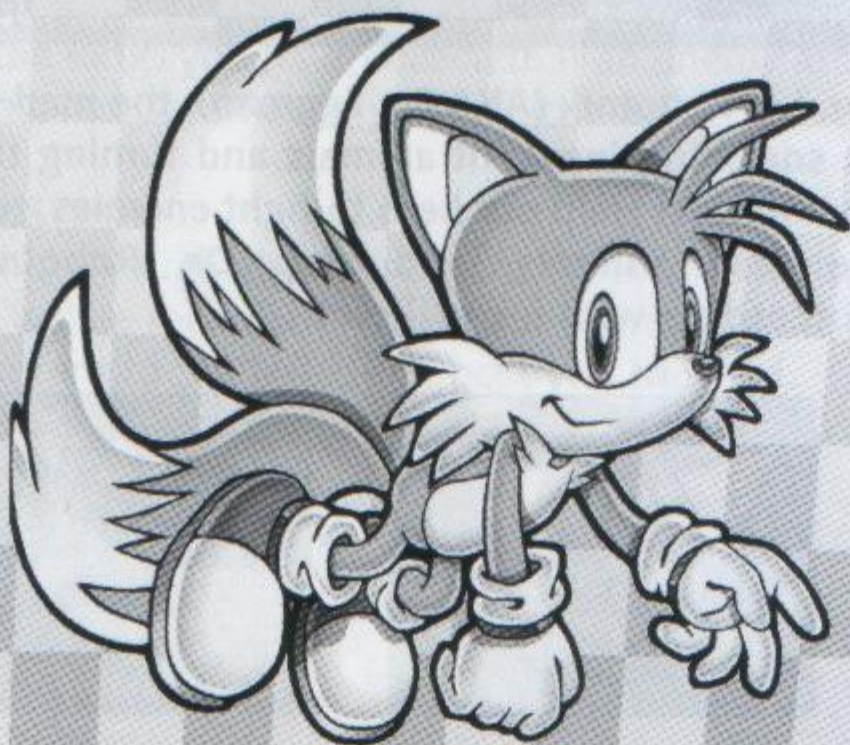
- **TIME BONUS**

This bonus is based on how much time you took to clear the Act.

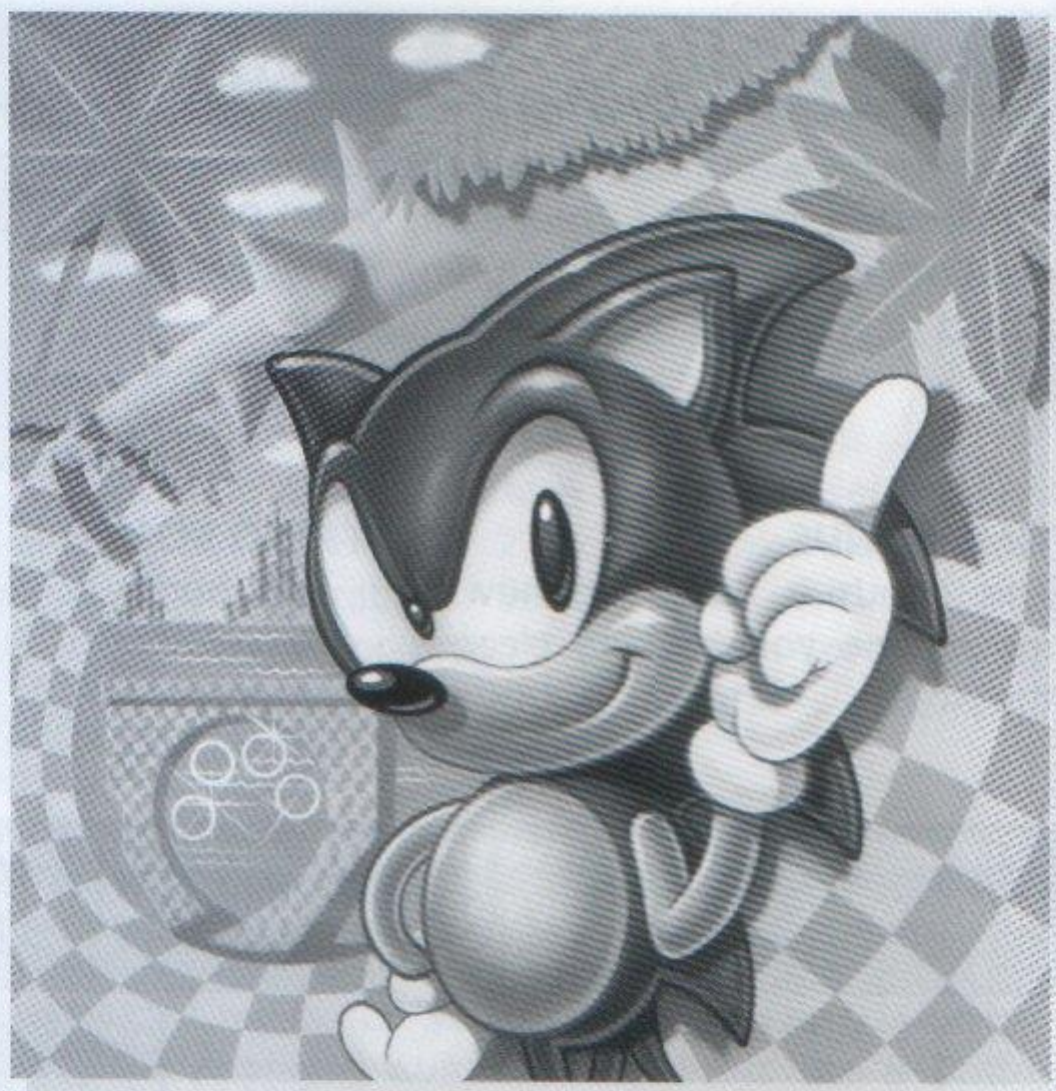
- **RING BONUS**

This bonus is determined by the number of Rings you have left at the end of an Act.

The scoring features above do not apply to Sonic 3D Flickies' Island, Sonic the Hedgehog Spinball, and Dr. Robotnik's Mean Bean Machine.



# SONIC™ THE HEDGEHOG



Original Release.....June 1991

Dr. Ivo Robotnik (AKA Dr. Eggman), the mad scientist, is snatching innocent animals and turning them into evil robots! Help our hero to fight enemies, rescue the helpless animals, and stop Dr. Robotnik from succeeding with his evil plot.



# SONIC THE HEDGEHOG

## • GAME OBJECTIVE

Avoid traps and crazed robots as you dash through 6 hazardous Zones, each with 3 exciting Acts. You will face Dr. Robotnik at the end of every third Act. You have 10 minutes Game Time to clear each Act. After 10 minutes, a "TIME OVER" message will appear and you will lose one Life.

## EXTRA CONTROLS

The following game controls are unique to this title.

- While standing still, press  $\uparrow/\downarrow$  to scroll the screen up and down. (This will not work if Sonic is already at the highest or lowest point).
- \* Spin Dash mentioned on P.5 cannot be used in this game.

## GAME SCREEN



- ① Present score
- ② Time elapsed
- ③ Number of Rings  
(\*Flashes when zero)
- ④ Remaining Lives

## ITEMS & OBJECTS

### • RINGS

Staying alive will be tough, but by grabbing Rings Sonic won't be hurt when attacked. If an enemy attacks, you will lose the Rings you have collected. If an enemy attacks while Sonic has Zero Rings, you will lose 1 Life.



### • LAMP POSTS

By crossing through the Lamp post, your present score and time will be recorded. If you fail to complete the Act, you will return to the last Lamp post you touched.



# SONIC THE HEDGEHOG

## • SPECIAL ITEMS

Smash open the video monitors with Spin Attack to get Special Items.



**Super Ring:** Earns you 10 Rings at once!



**Shield:** Prevents you from losing Rings or being hurt when attacked (Won't protect you from other obstacles.).



**Power Sneaker:** Makes you run super sonic fast!



**1-Ups:** Gives you an extra Life.



**Invincible:** Keeps you safe from enemy attack for a short time (but won't protect you from other obstacles).

## SECRET ZONE

If you have 50 Rings at the end of any Act, you can warp to the Secret Zone by grabbing the giant gold Ring.



Use the Spin Attack by ricocheting off multicoloured blocks in a 360° rotating maze. In each Secret Zone, the aim is to grab the Chaos Emerald and as many Rings as you can while keeping away from the Goal Blocks.



**Chaos Emeralds:** These come in 6 different colours: yellow, pink, blue, green, red and white. You can find one in every Secret Zone so collect them all!



**Goal Block:** This is the end of the Zone. Touch this and you will return to the previous Zone empty handed.



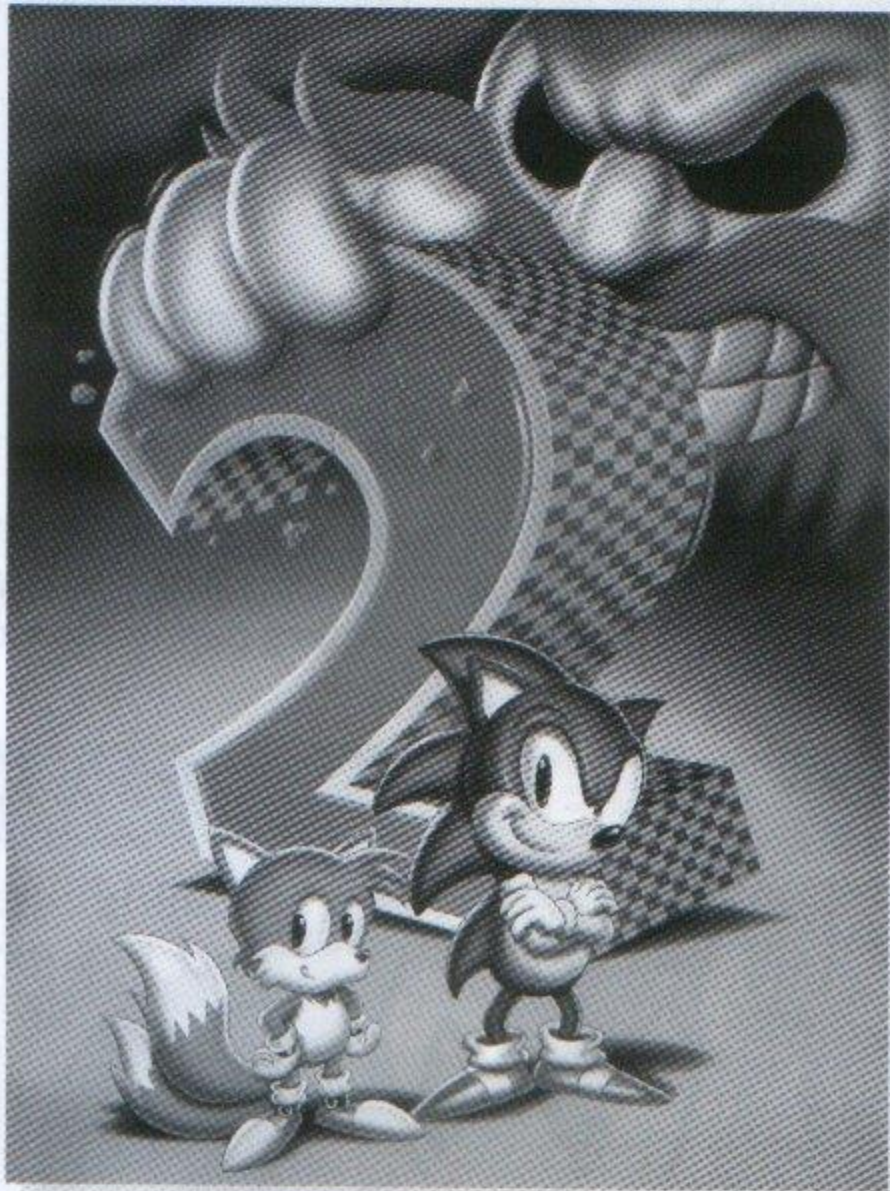
## PLAY TIPS

- Grab all the Rings you can. When you lose the Rings, rush to grab them before they disappear.
- Watch the traps carefully to see how they move and improve your chances of avoiding them.
- Look for ways to get to places that seem impossible to reach.
- Use the Spin Attack to find hidden items.
- Look for secret rooms.
- Remember the Time Bonus. There's no time to lose!
- Destroy enemies in succession for bonus points!
- By collecting Rings and improving your score, you may be lucky and obtain a Continue worth 3 more lives after "GAME OVER." Press START/PAUSE before the timer expires during the Continue Screen.



# SONIC 2

## THE HEDGEHOG



Original Release ..... Nov 1992

Dr. Robotnik has returned, again bent on world domination. Join Sonic and his sidekick Miles "Tails" Prower the fox as they try to stop the demented scientist from discovering the Chaos Emeralds and completing the ultimate weapon, the "Death Egg."



# SONIC THE HEDGEHOG 2

## • GAME OBJECTIVE

Avoid traps and Badniks as you guide Sonic and his sidekick Tails through 10 different Zones on the trail of the mad scientist Dr. Robotnik. You have 10 minutes Game Time to clear each Act. If you go over 10 minutes, a "TIME OVER" message will appear and you will lose one Life. In "1 PLAYER" mode, the controller must be plugged into the Controller Socket 1.

## • 2 PLAYER MODE (SIMULTANEOUS COMPETITION)

With 2 players, Sonic and Tails compete to clear each Act in the fastest time while gathering Score Points, Rings and Super Items. The game has 3 Regular Zones (2 Acts each) and a Special Stage. Player 1 moves Sonic through the Zone on the top half of the screen, and Player 2 moves Tails through the same Zone on the bottom half.

## GETTING STARTED



During the Title Screen, use  $\uparrow/\downarrow$  to select either "1 PLAYER," "2 PLAYER VS," or "OPTIONS" and press START/PAUSE to enter. By selecting "1 PLAYER," the game will begin when you press START/PAUSE.

If you enter "2 PLAYER" on the Title Screen, the Zone Selection Screen will be displayed. Use Control Stick / + Control Pad to select from the 3 Zones or the Special Stage and press START/PAUSE to start the 2 Player VS Competition.



If you enter "OPTIONS" on the Title Screen, the Options Screen of the game will be displayed. Use  $\uparrow/\downarrow$  to select "PLAYER SELECT," "VS MODE ITEMS" or "SOUND TEST" and  $\leftarrow/\rightarrow$  to change the settings or to select sounds. See the options details below.

### PLAYER SELECT

You can choose a 1 player game with Sonic and Tails together, or Sonic Alone / Tails Alone.

### VS MODE ITEMS

Choose All Kinds of Items, or the Teleportation item only in the video monitors in 2 Player VS game.

### SOUND TEST

Press the B Button and  $\leftarrow/\rightarrow$  to change the sound number and press the A or X Buttons to hear the music or sound.

For "PLAYER SELECT" and "VS MODE ITEMS" press START/PAUSE to start the game from the Options Screen.

# SONIC THE HEDGEHOG 2

## EXTRA CONTROLS

The following game controls are unique to this title.

- In Metropolis Zone, use ←/→ to turn the metal nut up or down the screw.



- In Casino Night Zone, hold down the A, B, or X Buttons to push down a spring. Release the Button to spring away



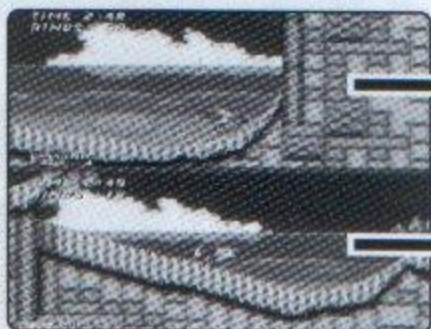
- In 1 Player mode, a second player can take control of "Tails" using Controller 2. Rings collected by "Tails" are added to Sonic's total.

## GAME SCREEN



- 1 Present score
- 2 Time elapsed
- 3 Number of Rings (\*Flashes when zero)
- 4 Remaining Lives

\* Game Screen of "1 PLAYER" game.



PLAYER 1  
SONIC

PLAYER 2  
TAILS

\* Split-screen of "2 PLAYER" game.

## ITEMS & OBJECTS

### RINGS

By grabbing Rings you won't be hurt when attacked by an enemy. If you are attacked when you don't have any Rings, you will lose one Life. An extra Life is awarded when you collect 100 and 200 Rings. Rings collected by Tails are also added to your total.





# SONIC THE HEDGEHOG 2

- **STARPOSTS**

By touching a Starpost, your present score and time will be recorded. If you lose a Life, you will return to the last Starpost you touched.

Touch a Starpost while holding 50 Rings or more and you'll see a Star Circle spinning above it. Jump in to enter a Special Stage (See below).



- **SPECIAL ITEMS**

Smash open the video monitors with Spin Attack to get Special Items.



**Super Ring:** Earns you 10 Rings at once!



**Power Sneaker:** Makes you run super sonic fast!



**1-Ups:** Gives you an extra Life.



**Invincible:** Keeps you safe from enemy attack for a short time (but won't protect you from other obstacles).



**Shield:** Prevents you from losing Rings or being hurt when attacked once only (but won't protect you from other obstacles).

## SPECIAL STAGE

This is your chance to collect a Chaos Emerald. Speed around the chute, picking up as many Rings as you can. Sidestep or jump over the bombs to stay in the race. If you finish the Stage, you will receive a Chaos Emerald and return to the Star Post on your original Zone.



# SONIC THE HEDGEHOG 2

## 2 PLAYER COMPETITION

Compete to obtain the highest score and to clear the Act in the fastest time. When one player finishes, a timer will count down from 60 seconds (see right). The other player must finish within 60 seconds.



### • SPECIAL ITEMS

Break open monitors to receive a mystery Special Item. The Special Items are revealed when they pop out.



The face you see on a 1-Ups Item is the character that receives it, regardless of who uncovers it.



Watch out when you see Robotnik's face! You will lose all of your Rings that you have collected.



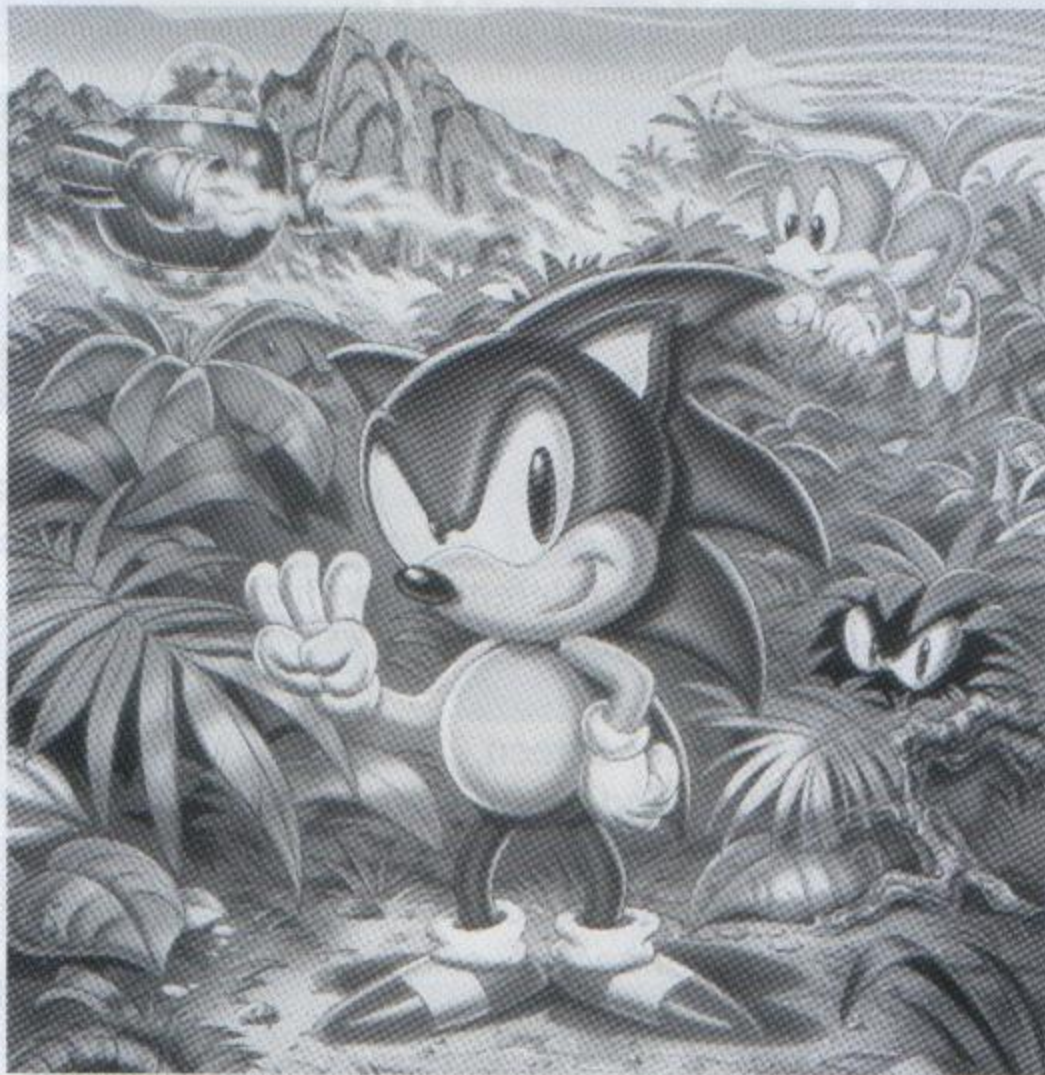
When "Teleportation Only" is selected on the Options Screen (of this game), Sonic and Tails will switch places whenever a monitor is smashed.

## PLAY TIPS

- Jump on levers, hang from vines, use the Spin Attack to find hidden items.
- In the Special Stage, don't move too fast or you may miss the Rings!
- In 2 Player VS Competition, concentrate on your own screen. Regardless of the end time, you can always win by collecting Rings and Special Items to improve your overall score.
- You can Continue once for every 100,000 points after "GAME OVER." Press START/PAUSE before the timer expires during the Continue Screen.

# SONIC 3

THE HEDGEHUG™



Original Release .....Feb 1994

Dr. Robotnik's "Death Egg" has lost its ability to fly after crash landing on the Floating Island, and only the power of the Chaos Emeralds can repair his ship. To obtain these, he tricks their guardian Knuckles the Echidna convincing him that Sonic and Tails are really his enemies...



THE SEGA SATURN

# SONIC THE HEDGEHOG 3

- **GAME OBJECTIVE**

Dodge Badniks and traps set by Knuckles, collect Rings, and uncover Chaos Emeralds as you guide Sonic and his sidekick Tails through 6 different Zones on the trail of the deranged scientist Dr Robotnik.

- **2 PLAYER MODES (SIMULTANEOUS COMPETITION)**

Each player can control Sonic, Tails or Knuckles and compete in splitscreen mode. Characters are selected at the start of the game. There are five 2 Player Zones, and in each you must complete 5 circuits.

## GETTING STARTED

During the Title Screen, use  $\uparrow/\downarrow$  to select either "1 PLAYER" or "COMPETITION" and press START/PAUSE to enter.



After selecting "1 PLAYER" on the Title Screen, you will enter the Game Save Feature Screen if a Memory Card is inserted. The Game Save Feature allows you to store up to 6 different game files. Each game you save will be stored in one of the 6 Game Save Windows.

During the Game Save Feature Screen, use  $\leftarrow/\rightarrow$  to select the Game Save Window. To start a new game, select a window labelled "NEW" (initial format) and use  $\uparrow/\downarrow$  to select your character(s). If Controller 2 is connected, select Sonic and Tails for 2 Player mode.



To play without saving the game, select the "NO SAVE" window. To delete a game file, select Dr. Robotnik on the far right and press the B, X Buttons or START/PAUSE. Then confirm the file you wish to delete. If you complete a game and collect all the Chaos Emeralds, you can start games in any Zone by using  $\uparrow/\downarrow$  from the finished window.

Press the A Button during to return to the Title Screen.

- **SAVING GAME FILES**

To save a game data for Sonic the Hedgehog 3, press the Z Button anytime during gameplay and select "Save & Exit".



## EXTRA CONTROLS

The following game controls are unique to this title.

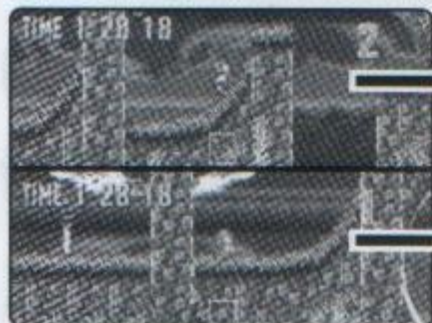
- Press the A, B, or X Buttons while Sonic is jumping to generate a temporary shield.
- Press the A, B, or X Buttons twice to make Tails fly, or swim when he's in water. Use this to help Sonic by airlifting him out of danger, or to otherwise unreachable areas.

## GAME SCREEN



- ① Present score
- ② Time elapsed
- ③ Number of Rings (\*Flashes when zero)
- ④ Remaining Lives

\* Game Screen of "1 PLAYER" game.



PLAYER 1

\* Split-screen of "COMPETITION" game.

PLAYER 2

## ITEMS & OBJECTS

### RINGS

By grabbing Rings you won't be hurt when attacked by an enemy. If you are attacked when you don't have any Rings, you will lose one life. Rings collected by Tails are also added to your total, which can later get you extra Lives and bonus points.



### STARPOSTS

By touching a Starpost, your present score and time will be recorded. If you lose a Life, you will return to the last Starpost you touched.

Touch a Starpost with 50 Rings or more and you'll see a Star Circle spinning above it. Jump in to enter a Bonus Stage (See P.23).



# SONIC THE HEDGEHOG 3

## • SPECIAL ITEMS

Smash open the video monitors with Spin Attack to get Special Items.



**Super Ring:** Earns you 10 Rings at once!



**Invincible:** Protects against harm from Badniks for a short period. Some moving objects are still harmful though.



**Flame Shield:** Protects from a fire attack, and by leaping into the air and pressing the A, B, or X Buttons, Sonic can perform a mid-air Fireball Spin Dash.



**Water Shield:** Breathe underwater and by leaping into the air and pressing the A, B, or X Buttons, Sonic can bounce along like a ball.



**Lightning Shield:** Turns Sonic into a Ring magnet, and protects against electric and energy ball attacks. Use the A, B, or X Buttons in mid air to perform a double jump.



**Power Sneaker:** Helps you run super sonic fast!



**1-Ups:** Gives you an extra Life.



**Robotnik:** DANGER! Causes the same damage as a Badnik attack!

## SPECIAL STAGE

Every Act has a hidden room with a giant Ring. Leap into the Ring to teleport to the Special Stage. This is your chance to obtain a Chaos Emerald. Collect the blue spheres and avoid the red ones. When you've collected all the blue spheres, a Chaos Emerald will appear.



## BONUS STAGE

To find the Bonus Stage, collect 50 or more Rings during an Act, touch a Starpost and then leap into the tiny stars that appear. In the Bonus Stage, grab extra 1-Ups, Special Items, and Rings by turning the crank of the Gumball Machine.



## COMPETITION GAMES

After selecting "COMPETITION" on the Title Screen, you will enter the Competition Selection Screen. Use  $\uparrow/\downarrow$  to select the menu items as detailed below, and use  $\leftarrow/\rightarrow$  to choose whether or not to have Special Items in the game.



Press the A Button to return to the previous screen.

### GRAND PRIX MODE

Race through all 5 Zones.

### MATCH RACE

Race in any single Zone.

### TIME ATTACK

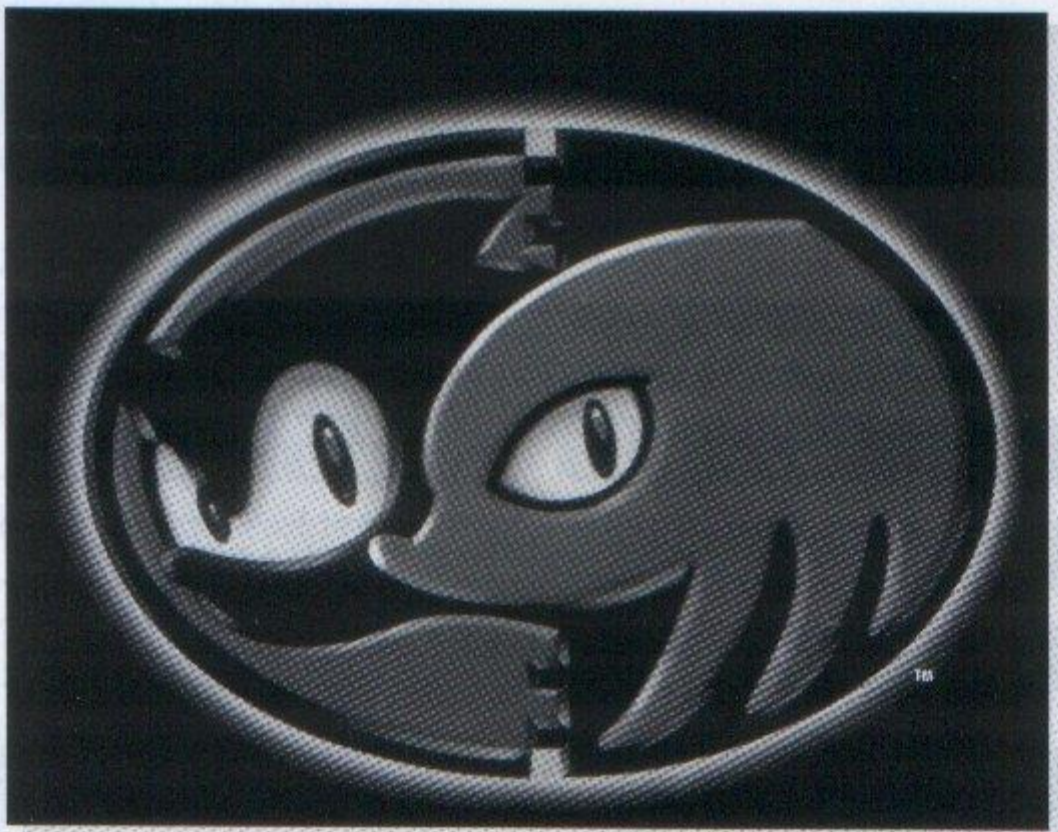
One-player practice mode.

## PLAY TIPS

- Look out for secret hidden areas. Walls with different patterns can sometimes be smashed through using the Spin Dash attack.
- Be prepared for underwater travel. Jump into giant air bubbles to breathe. Stay in the water too long and you will lose a life. The water shield allows Sonic to breath until it breaks.
- Jump towards end of Act markers before they land and a Power-Up may appear.
- Throughout the game, don't let Tails get stuck in passageways or traps. Have him activate Starposts or enter Special Stages as quickly as possible.
- Some traps take advantage of Sonic's ultra-fast speed, and some are impossible to escape from. When Sonic is flashing don't let him travel too fast.

# SONIC & KNUCKLES

25MAY 1994



Original Release .....Oct 1994

Having blasted Robotnik's "Death Egg" to smithereens, Sonic is determined to find the Emeralds hidden on the Floating Island, but Knuckles is equally determined to stop him by all means available. While they're going the rounds with each other, who will stop Dr. Robotnik?





# SONIC & KNUCKLES

## • GAME OBJECTIVE

Help Sonic or Knuckles to collect Rings, avoid Badniks and escape traps as Dr. Robotnik attempts another dastardly plot to take over the world. You have 10 minutes Game Time to clear each Act. If you go over 10 minutes, a "TIME OVER" message will appear and you will lose one Life.

## TITLE SCREEN

During the Title Screen, use  $\uparrow/\downarrow$  to select either "SONIC" or "KNUCKLES" and press START/PAUSE to begin the game.



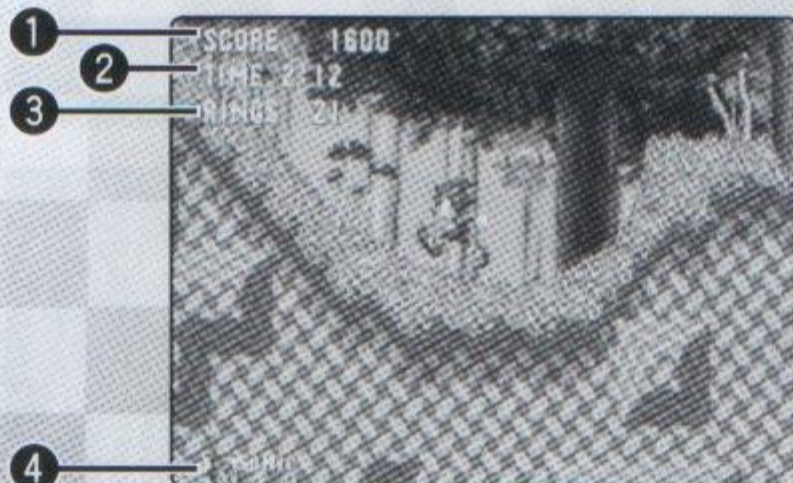
## EXTRA CONTROLS

The following game controls are unique to this title.

- Press the A, B, or X Buttons while Sonic is jumping to generate a temporary shield.
- While Knuckles is jumping, hold down the A, B, or X Buttons to glide through the air and use  $\leftarrow/\rightarrow$  to control the direction of glide. You can use this move to attack opponents.
- Knuckles can perform a wall climb by jumping towards a vertical surface and pressing the A, B, or X Buttons to stick to the surface. Use  $\uparrow/\downarrow$  to climb and then press the A, B, or X Buttons to jump off.



## GAME SCREEN



- 1 Present score
- 2 Time elapsed
- 3 Number of Rings (\*Flashes when zero)
- 4 Remaining Lives

## ITEMS & OBJECTS

- **RINGS**

By grabbing Rings you won't be hurt when attacked by an enemy. If an enemy attacks when you don't have any Rings, you will lose one Life. Collect 100 Rings to get an extra Life, and 50 Rings during a 3D Special Stage or Bonus Stage to get a Continue (See below and P.27).



- **STARPOSTS**

By touching a Starpost, your present score and time will be recorded. If you lose a Life, you will return to the last Starpost you touched. Touch a Starpost with 50 Rings or more and you'll see a Star Circle spinning above it. Jump in to enter a Bonus Stage (See below).



- **SPECIAL ITEMS**

Smash open the video monitors with Spin Attack to get Power-Ups. For details of the Special Items for this game, please refer to the Special Items section in Sonic the Hedgehog 3 (See P.22).

## 3D SPECIAL STAGE

Every Act has a hidden room with a giant gold Ring. Leap into the Ring to teleport to the 3D Special Stage. This is your chance to obtain a Chaos Emerald.



Collect the blue spheres and avoid the red ones. Look for square formations among the blue spheres, and by grabbing the spheres around the edge, all inner spheres will turn to Rings. When you've collected all the blue spheres, the Chaos Emerald will be yours. Collect 50 Rings in this Stage to get a Continue.

## BONUS STAGE

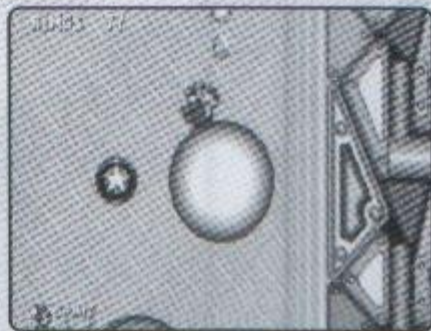
Collect 50 Rings, activate a Starpost, and leap into the tiny stars that appear above to enter a Bonus Stage. The amount of Rings you are holding determines which Stage you go to.



## PLAY TIPS

- **GLOWING SPHERES STAGE**

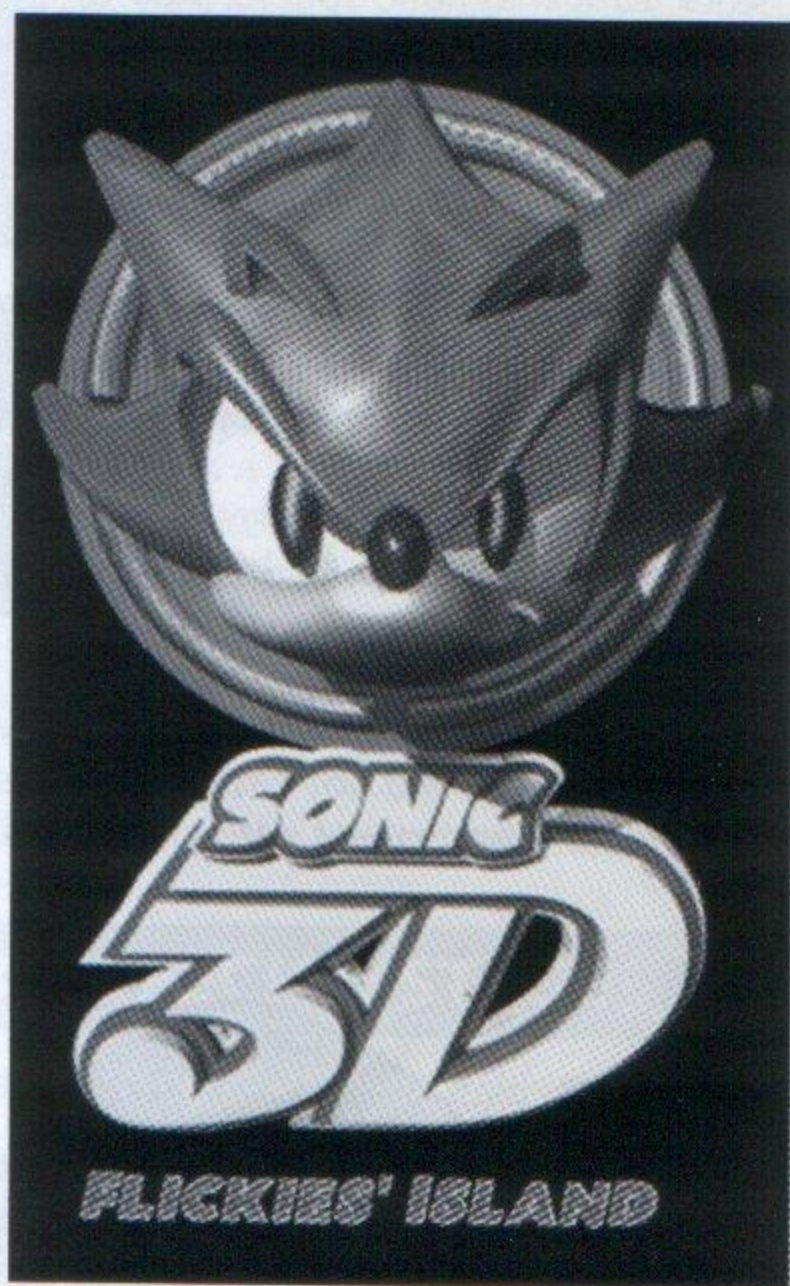
Sonic is stuck to a magnetic sphere. Roll to the top before jumping to a higher one. Use the flippers to help you, and watch out for the force field creeping up from below!



- **SLOT MACHINE STAGE**

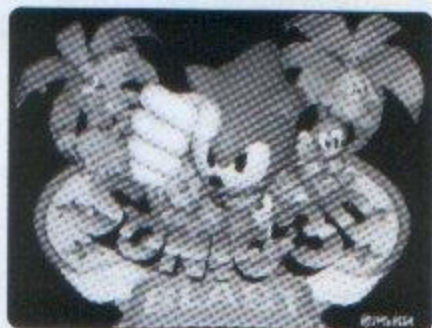
Collect Rings when the tumblers roll. Jump towards the centre to stay in this Stage.





Original Release ..... Nov 1996

Sonic travels to Flicky Island only to find that Dr. Robotnik has turned the mysterious birds known as Flickies into vicious robots! Help Sonic to rescue his friends and foil the deranged scientist's fiendish plot.



# SONIC 3D FLICKIES' ISLAND

## • GAME OBJECTIVE

Defeat the enemies and rescue the Flickies by bringing them back to their own dimension through the Giant Rings! Jump on or Spin Dash into a robot to free the Flicky inside. Once freed, move past them to attract their attention and they will follow you obediently. Take care though as they tend to scatter when Sonic is attacked by enemies.

## GETTING STARTED

### • OPTIONS MENU

Press START/PAUSE during the Title Screen to display the the Options Menu of this title. Use  $\uparrow/\downarrow$  to select either "START", "CONTROL" and "SOUND TEST" and press START/ PAUSE to enter.



### CONTROL

Set the game controls in "CONTROL." Press the B or X Buttons to toggle between the two settings. Press START/PAUSE to enter the setting.

Note that the keys ("A," "B," and "C") represents the MEGA DRIVE™ keys, and not the NINTENDO GAMECUBE CONTROLLER Buttons (see P.6 for Controller Configuration)

### SOUND TEST

Select "SOUND TEST" and listen to the BGM (music) and SFX (sound) from this title. Use  $\uparrow/\downarrow$  to select "BGM" or "SFX" and use  $\uparrow/\downarrow$  to change the track number, then press the B or X Buttons to play. Press the A Button to stop the BGM.

### START

Select "START" and press START/PAUSE to begin the game.

### • PROLOGUE SCENE



When you start your game, the prologue scene will play. Press the A Button to move on to the next scene. Press START/PAUSE to skip the whole prologue scene and begin Zone 1.

# SONIC 3D FLICKIES' ISLAND

## GAME CONTROLS

The following set of default controls is unique to this title.

- Use the B or X Buttons to jump and Spin Attack.
- Hold down the Control Stick /+ Control Pad to move faster (dash), and press the reverse direction to brake quickly.
- While standing still, hold down the A Button to spin, and release to perform a Spin Dash.
- While moving, press the A Button to move freely while spinning and attack enemies.

## GAME SCREEN



- 1 Number of Rings  
(\*Flashes when zero)
- 2 Remaining Lives
- 3 Flicky Counter  
(\*Lights up when found.)

## ROBOTS & FLICKIES



Spin Attack or Spin Dash into a robot (top) to break it open and release the Flicky that is trapped inside. After the Flicky is free, run past it to attract its attention. The Flicky then will follow Sonic obediently (bottom). When Flickies are following, they can help you get items in places that are tough to reach.



If Sonic gets hurt by a robot, the Flickies following will scatter so try to pick them up again.

## ITEMS & OBJECTS

### • RINGS

Collect Rings to protect you from enemy attack and increase your score. Grab 50 Rings or more to gain access to Knuckles and Tails Bonus Stages.



# SONIC 3D FLICKIES' ISLAND

## • SPECIAL ITEMS

Smash open the video monitors with Spin Attack to get Special Items.



**Rings:** Earns you 10 Rings at once!



**Shields:** Blue Shields protect against regular and electrical damage. Red Shields protect against regular and fire damage. Gold Shields protect against enemy attacks and enable Sonic to perform Blast Attacks! Press the jump Button twice to home in on the enemy!



**Sonic Icons / Extra Life :** Collect 10 Icons to earn a Continue. Extra Life can be found inside the video monitors or the Bonus Stage if you collected all 7 Chaos Emeralds.

## • SPRINGS AND TRANSPORTS

Use Springs to jump from one place to another. You can also collect the Rings and Sonic Icons above the Springs.



Transports move Sonic up and down levels. Use the Spin Dash to activate some Transports.



## • CHAOS EMERALDS

When you have 50 Rings or more, find Tails or Knuckles and they will transport you to a Bonus Stage where the Chaos Emeralds can be found.



## • DIMENSION RINGS

Jump and grab the red part of the Dimension Ring whenever Sonic has Flickies following him. It will transport them back to the safety of their own dimension.



## SONIC THE HEDGEHOG SPINBALL™



Original Release ..... Nov 1993

The deranged scientist Dr. Robotnik is once again turning the animals of Mobius into robots using his monstrous contraption the Veg-O-Fortress. Only Sonic can penetrate the pinball defence system, free the animals, collect the Emeralds and put a stop to his fiendish plan.





# SONIC THE HEDGEHOG SPINBALL

## • GAME OBJECTIVE

Using Sonic as a pinball, work your way up through the Veg-O-Fortress uncovering concealed passageways, collecting Emeralds and avoiding deadly traps. Up to four people can take turns to control Sonic in this thrill packed adventure.

## GETTING STARTED

### • TITLE SCREEN



During the Title Screen, use  $\uparrow/\downarrow$  to select either "START" or "OPTIONS" and press START/PAUSE to enter.

For multiplayer game (alternating play) game, change the number of players in "OPTIONS."

### • OPTIONS MENU

In the Options Menu, use  $\uparrow/\downarrow$  to select different menu items. Use  $\leftarrow/\rightarrow$  to change settings and press START/PAUSE to return to the Game Menu to begin your game.

Note that the keys ("A," "B," and "C") for FLIPPER represents the MEGA DRIVE™ keys, and not the NINTENDO GAMECUBE CONTROLLER Buttons (see P.5 for Controller Configuration).



## GAME CONTROLS

The following set of controls is unique to this title.

START/PAUSE

$\leftarrow/\rightarrow$

A / B / X Button

$\downarrow$  then A / B / X Button

B Button

A Button

X Button

A + B + X Button

PAUSE GAME

MOVE SONIC

JUMP (ON GROUND)

SPIN DASH

TILT LEFT FLIPPER

TILT RIGHT FLIPPER

TILT BOTH FLIPPERS

TILT SHAKE (BONUS ROUND)

When Sonic is in flight, move him left and right with the Control Stick / + Control Pad for better position when he hits a bumper or target, or when he's falling back towards the drain bumpers or flippers.

# SONIC THE HEDGEHOG SPINBALL

## GAME SCREEN



P1 2 4,447,500

The Status Strip at the top of the screen shows the following information at various stages of the game.

**Player Numbers and Lives:** Shows current level, who is playing and the number of lives remaining. Sonic starts with 3 lives. Reach 20,000,000 points and gain an extra Life.

**Emeralds:** Shows the number of Emeralds remaining in each level, and how many times an obstacle needs to be hit before opening a path to the Emerald.

**Urgent Orders:** These messages need a quick reaction!

**Loop Successes:** Shows how many loops you've completed.

**Score Update:** Shows your current score.

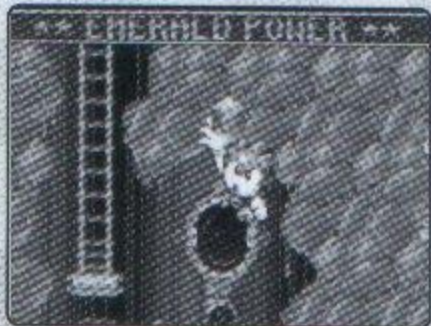
**End totals and Bonuses:** Shows the total score for loops, Rings and time at the end of a level.

**Sonic Status:** "Too Baaad," when you get another shot at the level.

## GAME STRATEGY

Each level has a number of Chaos Emeralds you must collect before confronting the boss robot and completing the level. A variety of hatchways and other obstacles stand between you and the Emeralds. These can only be passed by flicking hidden switches, and by repeated Sonic attack force.

Follow the directions marked in the background to make sure you hit the right spots.



With the blockages cleared, follow the path to find the Emeralds.

# SONIC THE HEDGEHOG SPINBALL

When all the Emeralds have been gathered, Sonic must destroy the level boss.



## BONUS ROUNDS

At the end of each level, there is a Bonus Round. This is a game of regular pinball and you have 3 balls to play.

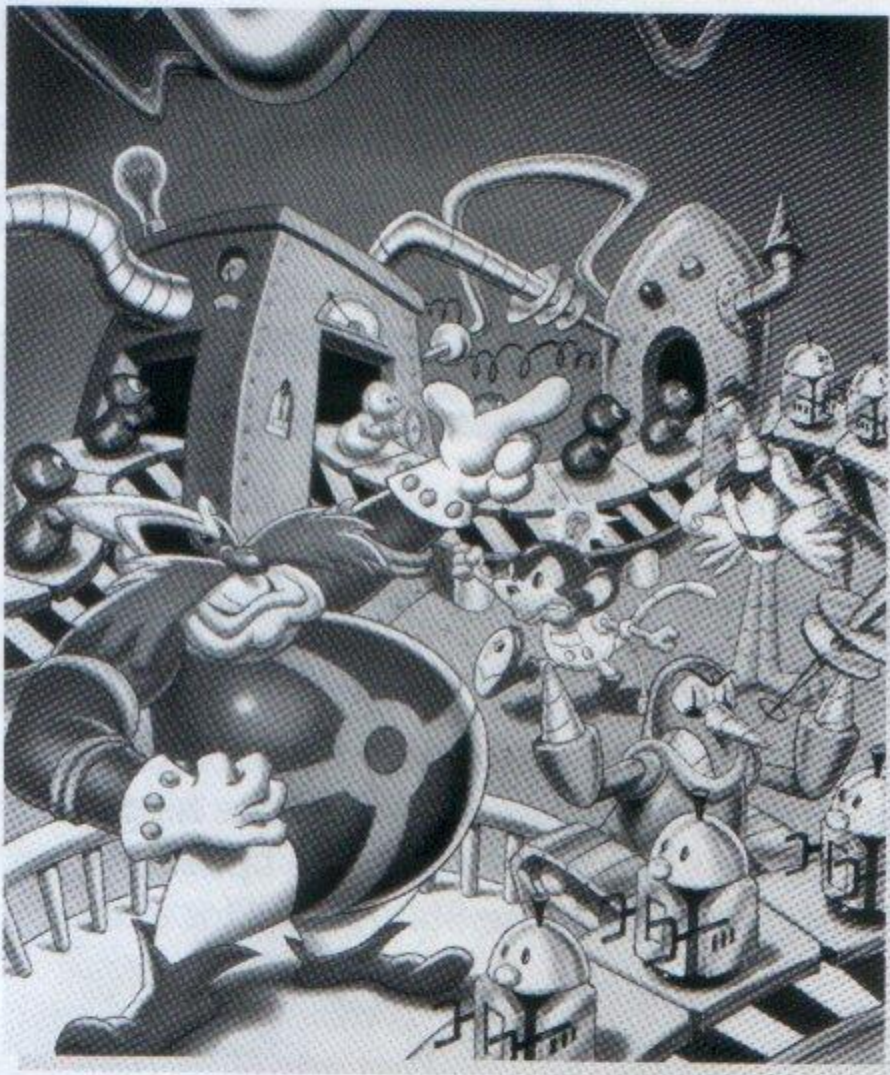


## PLAY TIPS

- Launch Sonic by tilting both flippers together with the x Button. This is a safe and easy tactic for beginners.
- Watch out for lights and arrows showing important spots and routes in the background.
- Catch Sonic on the flippers by holding them up as he enters the Alley Ramp. This way you can aim him more accurately.
- To shoot straight up, fire when near the hinge of a flipper. To launch at an angle, let him roll towards the tip first.
- Don't forget to watch the Status Strip for extra gameplay hints!

## DR. ROBOTNIK'S MEAN BEAN MACHINE

TM



Original Release .....Nov 1993

Dr. Robotnik is changing the jolly folk of Beanville into devious little robots that will help rid Planet Mobius of music and fun forever. Group the beans together to help them escape while working your way up to the wilier henchbots.



# DR.ROBOTNIK'S MEAN BEAN MACHINE

## • GAME OBJECTIVE

Remove the beans by stacking 4 of the same coloured beans together. Attack your opponent by creating chain reactions, but watch out for counter-attacks!

Beans drop from the top of the dungeon in pairs. When 2 beans of the same colour touch, they will link. When 4 or more beans are linked together, they disappear from the dungeon. Try to arrange the beans into groups as they drop to prevent them from overflowing.

## GETTING STARTED

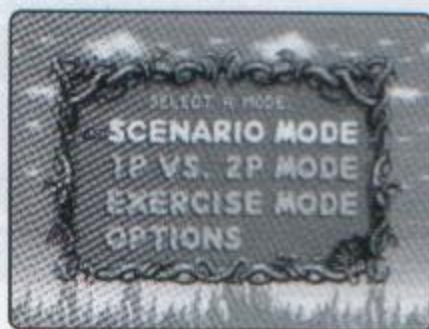
### • DEMO SCREEN



Wait a few seconds during the Title Screen to see Dr. Robotnik's explanation of his goals followed by a comprehensive demonstration of the game. Press START/PAUSE to bring up the Title Screen.

### • GAME MENU

Press START/PAUSE during the Title Screen to enter the Game Menu. Use  $\uparrow/\downarrow$  to select different menu items and press the A, B, X Buttons, or START/PAUSE to enter.



### SCENARIO MODE

Play against Robotnik's henchbots!

### 1P VS. 2P MODE

Simultaneous play against a friend!

### EXERCISE MODE

A practice mode against the timer.

### OPTIONS

Change various game settings.

## OPTIONS

In the Options Menu, use  $\uparrow/\downarrow$  to select different menu items. Use  $\leftarrow/\rightarrow$  to change settings and press START/PAUSE to return to the Game Menu to start your game.



# DR.ROBOTNIK'S MEAN BEAN MACHINE

- **KEY ASSIGNMENT**

Customise the game controls of the Controller.

Note that the keys ("A," "B," and "C") displayed on the Option Menu represents the MEGA DRIVE™ keys, and not the NINTENDO GAMECUBE CONTROLLER Buttons (see P.5 for Controller Configuration).

- **VS. COM LEVEL**

Set the difficulty level for Scenario Mode.

- **1P VS 2P MODE**

Choose the number of games to include when playing a friend.

- **SAMPLING**

Turn off certain sound effects.

- **INPUT TEST**

Test to make sure your Controller Buttons are set-up correctly.

## GAME CONTROLS

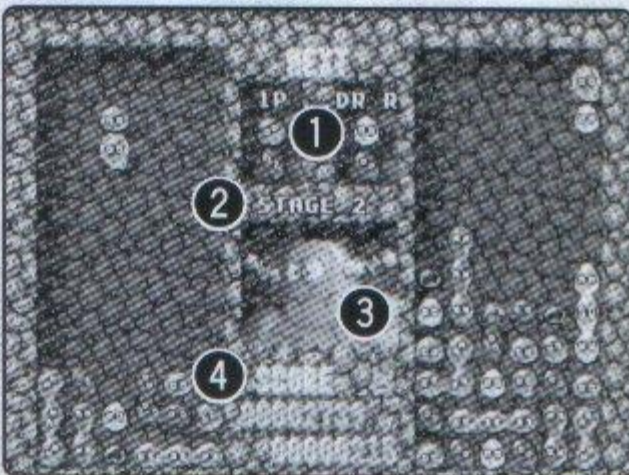
The following controls are common to all 3 Modes.

<b>START/PAUSE</b>	PAUSE GAME
←/→	MOVE BEANS
↓	SPEED UP DESCENT
<b>A Button</b>	ROTATE COUNTERCLOCKWISE
<b>B / X Button</b>	ROTATE CLOCKWISE

## GAME SCREEN

- **SCENARIO MODE**

During Scenario Mode, your dungeon will appear on the left side of the screen while your opponent's (CPU) dungeon appears on the right.



- ① **Next Pair of Beans**

- ② **Current Stage**

- ③ **Opponent (Henchbot)**

Check your progress from the robot's expression.

- ④ **Scores**

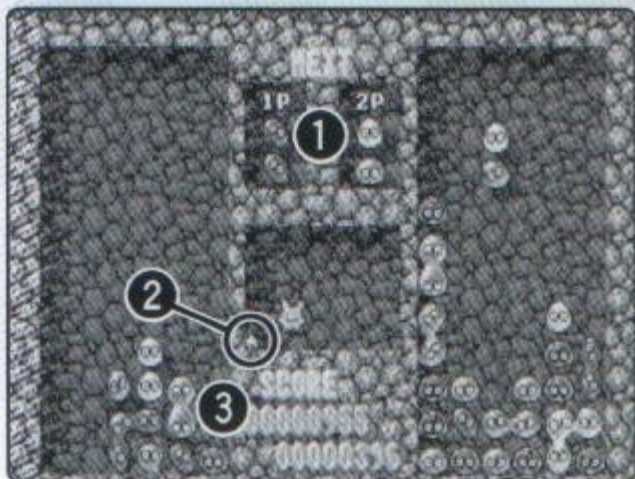
Top: yours Bottom: opponent's

\*Note that your dungeon will appear on the right side of the screen if you play Scenario Mode with the Controller connected to Controller Socket 2.

# DR.ROBOTNIK'S MEAN BEAN MACHINE

## • 1P VS 2P MODE

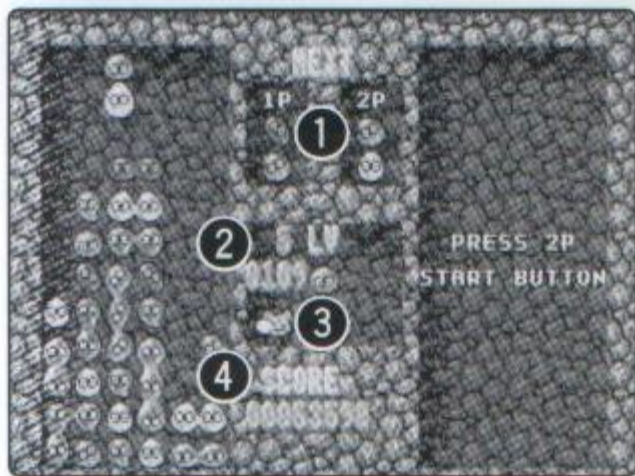
During the 1P VS 2P Mode, Player 1's dungeon is on the left side of the screen and Player 2's dungeon is on the right.



- ① Next Pair of Beans
- ② Games Won  
Left: Player 1  
Right: Player 2
- ③ Scores  
Top: Player 1 Bottom: Player 2

## • EXERCISE MODE

During the Exercise Mode, Player 1's dungeon is on the left side of the screen and Player 2's dungeon is on the right.



- ① Next Pair of Beans
- ② Current Levels  
Left: Player 1 Right: Player 2
- ③ Has Bean  
Occasionally drops into your dungeon to help save Beans.
- ④ Scores  
Top: Player 1 Bottom: Player 2

## BEANS

Link 4 or more Beans of the same colour to make them disappear from your dungeon. Link them vertically, horizontally, or in clumps.

If you drop a pair of beans horizontally on an uneven surface, any Bean left hanging will drop to the lowest point of the column.

The descent rate of the Beans can suddenly speed up dramatically, even in the early levels. Don't panic though! This is only temporary.

## • REFUGEE BEANS

Refugee Beans will drop into the opponent's dungeon whenever a player successfully releases a group of Beans. Refugee Beans cannot be linked to any colour, and can only leave when neighbouring beans disappear.



## DR.ROBOTNIK'S MEAN BEAN MACHINE

Check the top of your dungeon for advance warning of how many Refugee Beans will drop (See below).

**One Small Clear Bean:** One Refugee Bean.

**One Big Clear Bean:** Six Refugee Beans.

**One Big Red Bean:** Thirty Refugee Beans and big trouble!

The Greater the number of Beans that vanish (especially in a chain reaction), the greater the number of Refugee Beans will drop into your opponent's dungeon!

### SCORES

- Earn points when your Beans vanish. The bigger the chain reaction, the more bonus you can earn!
- Earn points by speeding up the descent rate of the Beans falling into your dungeon.
- If you win a game within a certain amount of time in Scenario Mode (110 seconds for a normal game), you receive a special Time Bonus for each second remaining.

If you've achieved a high score by the time you end the game, a High Score Screen will be displayed. Use  $\uparrow/\downarrow$  to select the letters and press the A, B, or X Buttons to fill in the next letter of your initials (up to 3 letters). Use  $\leftarrow$  to return and correct any mistakes.



### PASSWORD

A password appears when you win a Stage in Scenario Mode. Use this password to start future games from the next Stage up.

First choose Scenario Mode from the Game Menu, then select "CONTINUE." When the Password Screen is displayed, use  $\leftarrow/\rightarrow$  to highlight the type of Bean you want to fill in the space and press the B, or X Buttons to enter the Bean into the password. Use the A Button or select the backward arrow to return and correct any mistakes. When you are finished entering your password, press START/PAUSE or select END and press the B, or X Buttons. If your password is incorrect, a buzzer will sound.







# CREDITS



## **SEGA EUROPE, LTD.**

COO Sega Europe  
NAOYA TSURUMI

Director of Product Development  
KATS SATO

Localization Producer  
KUNIYO MATSUMOTO

European Product Manager  
MAT QUAECK

Senior Producer  
MATT O'DRISCOLL

Technical Producer  
ELLIOT MARTIN

Commercial Manager  
MARK HORNEFF

Localization team  
BRIGITTE NADESAN (FR)  
GIUSEPPE RIZZO (IT)  
MARTA LOIS GONZALEZ (ES)  
EVA BACKMANN (DE)

### SOE QA

ROY BOATENG  
DARIUS SADEGHIAN  
DAVID SMITH  
CHRIS GEILES  
PAUL JOSEPH  
MARCUS JOSEPH

## **INFOGRAMES EUROPE**

Infogrames London  
LARRY SPARKS  
MATT WOODLEY  
JON BROOKE  
VANESSA BLASIN  
JAKE TOMBS  
PAULINE NAM  
DANIEL WARRINGTON  
PETER THORNE

Infogrames Lyon  
ETIENNE PIQUET-GAUTHIER  
EMMANUELLE TAHMAZIAN  
VINCENT HATTENBERGER  
JENNY CLARK  
NADJA MANSEUR  
REBECKA PERNERED  
CAROLINE FAUCHILLE  
RAPHAELLE JONNERY  
OLIVIER ROBIN  
VINCENT LALOY  
SEBASTIEN APRIKIAN  
YVAN PEREZ  
KIM EA  
ELVIS ALVAREZ  
DAVID ERCHOFF COSTET

Sonic Mega Collection™ are either registered trademark or a trademark of Sega Corporation.

All Rights Reserved. © 1991, 1992, 1993, 1994, 1995, 1996, 2002 SEGA CORPORATION. This game is licensed for use with The NINTENDO GAMECUBE System only. Copying and/or transmission of this game is strictly prohibited. Unauthorized rental or public performance of this game is a violation of applicable laws.

# Notes

## Infogrames Games Customer Service Numbers

Country	Telephone	Fax	Email
• Österreich	Technische: 0900-400 654 (€ 1,35 Minute) Mo. - Sa. 14.00 - 19.00 Uhr	Spielerische: 0900-400 655	<a href="http://www.de.infogrames.com">http://www.de.infogrames.com</a>
• Belgie	<b>GAMECUBE: 0900 10800</b>  Open Maandag t/m Vrijdag 9.00 tot 17.30	-	-
• Danmark	<b>+44 (0)161 8278060/1</b>  09:30 to 17:00 Monday to Friday (except Bank Holidays)	-	<a href="mailto:helpline@uk.infogrames.com">helpline@uk.infogrames.com</a>
• Suomi	<b>+44 (0)161 827 8060/1</b>  09:30 to 17:00 Monday to Friday (except Bank Holidays)	-	<a href="mailto:helpline@uk.infogrames.com">helpline@uk.infogrames.com</a>
• France	Soluces: <b>0892 68 30 20</b> (0,34 €/mn) (24h/24) 3615 Infogrames (0,34 €/mn) Technique: <b>0825 15 80 80</b> (0,15€/mn Du lundi au samedi de 10h-20h non stop)	Infogrames France / Euro Interactive Service Consommateur 84 rue du 1 <sup>er</sup> mars 1943 69625 Villeurbanne Cedex	<a href="mailto:support@fr.infogrames.com">support@fr.infogrames.com</a> <a href="http://www.fr.infogrames.com">http://www.fr.infogrames.com</a>
• Deutschland	Technische: <b>0190 771 882</b> Spielerische: <b>0190 771 883</b> (€ 1,24 pro Minute) Mo. - Sa. 14.00 - 19.00 Uhr	-	<a href="http://www.de.infogrames.com">http://www.de.infogrames.com</a>
• Greece	<b>301 601 88 01</b>	-	<a href="mailto:info@gr.infogrames.com">info@gr.infogrames.com</a>
• Italia	-	-	<a href="mailto:info@it.infogrames.com">info@it.infogrames.com</a> <a href="http://www.infogrames.it">http://www.infogrames.it</a>
• Nederland	<b>GAMECUBE: 0909 0490444</b>  Open Maandag t/m Vrijdag 9.00 tot 17.30	-	-
• Norge	<b>+44 (0)161 827 8060/1</b>  09:30 to 17:00 Monday to Friday (except Bank Holidays)	-	<a href="mailto:helpline@uk.infogrames.com">helpline@uk.infogrames.com</a>
• Portugal	<b>+34 91 747 03 15</b> <b>+34 91 329 21 00</b> de 2 <sup>a</sup> a 6 <sup>a</sup> , entre as 09:00 e as 17:00	-	<a href="mailto:apoiocliente@pt.infogrames.com">apoiocliente@pt.infogrames.com</a>
• Israel	<b>+ 972-9-9712611</b>  16:00 to 20:00 Sunday - Thursday	-	<a href="mailto:infogrames@telerom.co.il">infogrames@telerom.co.il</a>
• España	<b>+34 91 747 03 15</b> <b>+34 91 329 21 00</b>  lunes a viernes de 9:00h -14:00h / 15:00h-18:00h	-	<a href="mailto:stecnico@es.infogrames.com">stecnico@es.infogrames.com</a>
• Sverige	<b>08-6053611</b>  17:00 till 20:00 helgfri måndag till fredag	-	<a href="mailto:rolf.segaklubben@bredband.net">rolf.segaklubben@bredband.net</a>
• Schweiz / Suisse	Technische: <b>0900 105 172</b> Spielerische: <b>0900 105 173</b> (2,50 CHF/Min) Mo. - Sa. 14.00 - 19.00 Uhr	-	<a href="http://www.de.infogrames.com">http://www.de.infogrames.com</a>
• UK	<b>Hints &amp; Cheats:</b> <b>09065 55 88 88</b> <small>*24 hours a day / 1£/min / inside UK only *You need the bill payer's permission before calling.</small>	<b>Technical Support:</b> <b>0161 827 8060/1</b> <small>09:30 to 17:00 Monday to Friday (except Bank Holidays)</small>	<a href="mailto:helpline@uk.infogrames.com">helpline@uk.infogrames.com</a>



3M  
10/11





SEGA®



INFOGRAVES

SONIC TEAM



Distributed by Infogrames, Landmark House, Hammersmith Bridge Rd.  
London W6 9EJ – England

SEGA is registered in the U.S. Patent and Trademark Office.  
Sega logo, and SONIC MEGA COLLECTION are either registered trade-  
marks or trademarks of Sega Corporation

© 1991, 1992, 1993, 1994, 1995, 1996, 2002 SEGA CORPORATION.  
All Rights Reserved.

[www.sega.com](http://www.sega.com)

PRINTED IN EUROPE